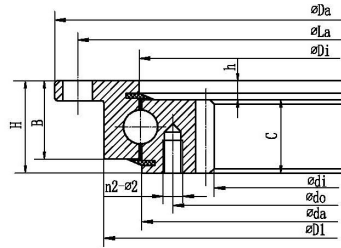


# Four point contact ball slewing bearing (with outer flange and internal gear type)



Выбрать	запрос	Подшипник		Rothe Erde Model	TG Model	Граничные размеры (мм)						Bolt hole diameter (mm)				Structure dimensions (mm)						Gear Parameters (mm)			Basic load rating Coa (kN)	Вес (kr)		
		Модель	INA Model			Да	Д:	ди	ЧАС	Ла	Ли	n1	n2	φ1	φ2	Д1	д:	б	час	Б:	С	Ди	да	м			г	дельта
SLIR15/280				340		216	39	324	252	20	20	M6	M6	310	238	30	5	34	34	279	277	4	56	224	300	10		
SLIR20/414Y	VLI200414N ZT			518		325	56	490	375	8	12	φ18	M12	458.5	350	40	11.5	44.5	47.5	415.5	412.5	5	67	335	600	28.5		
SLIR20/414	VLI 20 0414N ZT RL2			516		325	56	490	375	8	12	φ18	M12	456	350	40	11.5	44.5	47.5	415.5	412.5	5	67	335	300	36.3		
SLIR20/414	VLI200414N			518		325	56	490	375	8	12	18	M12		350	40	8.5	44.5	47.5	415.5	412.5	5	67	335	295	27.5		
SLIR20/414		232.20.0400.013		518		326.5	56	490	375	8	12	18	M12			45.5	10.5	45.5	45.5	415.5	412.5	5	67	335	250	27.1		
SLIR20/414Y		232.20.0400.503		518		326.5	56	490	375	16	12	18	M12			45.5	10.5	45.5	45.5	415.5	412.5	5	67	335	250	26.9		
SLIR20/414Y1		232.21.0475.013		517		326.5	56	490	375	8	12	18	M12			45.5	10.5	45.5	45.5	415.5	411	5	67	335	250	27.1		
SLIR20/414A			I.505.20.00.C	518		326.5	56	490	375	8	12	φ18	M12	453		46	10	46	46	415.5	412.5	5	67	335	500	35.4		
SLIR20/544Y	VLI200544N ZT			648		444	56	620	505	10	16	φ18	M12	588.5		44.5	11.5	44.5	47.5	545.5	542.5	6	76	456	790	40.6		
SLIR20/544Y3	VLI200544N			648		444	56	620	505	10	16	18	M12			44.5	11.5	44.5	47.5	545.5	542.5	6	76	456	385	38		
SLIR20/544Y2		232.20.0500.013		648		445.2	56	620	505	10	16	18	M12			45.5	10.5	45.5	45.5	545.5	542.5	6	76	456	330	36.9		
SLIR20/544Y4		232.20.0500.503		648		445.2	56	620	505	20	16	18	M12			45.5	10.5	45.5	45.5	545.5	542.5	6	76	456	330	36.7		
SLIR20/544Y1		232.21.0575.013		647		445.2	56	620	505	10	16	18	M12			45.5	10.5	45.5	45.5	545.5	541	6	76	456	330	36.9		
SLIR20/544			I.650.20.00.C	648		445.2	56	620	505	10	16	φ18	M12	583		46	10	46	46	545.5	542.5	6	76	456	700	40.2		
SLIR20/644Y	VLI200644N ZT			748		546	56	720	605	12	18	φ18	M12	688.5		44.5	11.5	44.5	47.5	645.5	642.5	6	93	558	900	47.4		
SLIR20/644Y2	VLI200644N			748		546	56	720	605	12	18	18	M12			44.5	8.5	44.5	47.5	645.5	642.5	6	93	558	455	45		
SLIR20/644Y3		232.20.0600.013		748		547.2	56	720	605	12	18	18	M12			45.5	10.5	45.5	45.5	645.5	642.5	6	93	558	390	43.7		
SLIR20/644Y4		232.20.0600.503		748		547.2	56	720	605	24	18	18	M12			45.5	10.5	45.5	45.5	645.5	642.5	6	93	558	390	43.4		
SLIR20/644Y1		232.21.0675.013		747		547.2	56	720	605	12	18	18	M12			45.5	10.5	45.5	45.5	645.5	641	6	93	558	390	43.7		
SLIR20/644			I.750.20.00.C	748		547.2	56	720	605	12	18	φ18	M12	683		46	10	46	46	645.5	642.5	6	93	558	780	53.3		
SLIR20/744Y	VLI200744N ZT			848		648	56	820	705	12	20	φ18	M12	788.5		44.5	11.5	44.5	47.5	745.5	742.5	6	110	660	530	54		
SLIR20/744Y3	VLI200744N			848		648	56	820	705	12	20	18	M12			44.5	8.5	44.5	47.5	745.5	742.5	6	110	660	530	51.5		
SLIR20/744Y2		232.20.0700.013		848		649.2	56	820	705	12	20	18	M12			45.5	10.5	45.5	45.5	745.5	742.5	6	110	660	450	51.1		
SLIR20/744Y4		232.20.0700.503		848		649.2	56	820	705	24	20	18	M12			45.5	10.5	45.5	45.5	745.5	742.5	6	110	660	450	50.8		
SLIR20/744Y1		232.21.0775.013		847		649.2	56	820	705	12	20	18	M12			45.5	10.5	45.5	45.5	745.5	741	6	110	660	450	51.1		
SLIR20/744			I.850.20.00.C	848		649.2	56	820	705	12	20	φ18	M12	783		46	10	46	46	745.5	742.5	6	110	660	910	63.1		
SLIR20/844Y	VLI200844N ZT			948		736	56	920	805	14	20	φ18	M12	888.5		44.5	11.5	44.5	47.5	845.5	842.5	8	94	752	1200	65.2		
SLIR20/844Y2	VLI200844N			948		736	56	920	805	14	20	18	M12			44.5	8.5	44.5	47.5	845.5	842.5	8	94	752	600	61.5		
SLIR20/844Y3		232.20.0800.013		948		737.6	56	920	805	14	20	18	M12			45.5	10.5	45.5	45.5	845.5	842.5	8	94	752	510	61.6		
SLIR20/844Y4		232.20.0800.503		948		737.6	56	920	805	28	20	18	M12			45.5	10.5	45.5	45.5	845.5	842.5	8	94	752	510	61.3		